



Designation: D7818 – 12 (Reapproved 2021)

Standard Test Method for Enumeration of Proteolytic Bacteria in Fresh (Uncured) Hides and Skins¹

This standard is issued under the fixed designation D7818; the number immediately following the designation indicates the year of original adoption or, in the case of revision, the year of last revision. A number in parentheses indicates the year of last reapproval. A superscript epsilon (ϵ) indicates an editorial change since the last revision or reapproval.

1. Scope

1.1 This test method covers the enumeration of bacteria that can hydrolyze protein/collagen in fresh (uncured) hides and skins. This test method is applicable to uncured hides and skins.

1.2 The values stated in SI units are to be regarded as standard. No other units of measurement are included in this standard.

1.3 *This standard does not purport to address all of the safety concerns, if any, associated with its use. It is the responsibility of the user of this standard to establish appropriate safety, health, and environmental practices and determine the applicability of regulatory limitations prior to use.*

1.4 *This international standard was developed in accordance with internationally recognized principles on standardization established in the Decision on Principles for the Development of International Standards, Guides and Recommendations issued by the World Trade Organization Technical Barriers to Trade (TBT) Committee.*

2. Referenced Documents

2.1 *ASTM Standards:*²

D6715 Practice for Sampling and Preparation of Fresh or Salt-Preserved (Cured) Hides and Skins for Chemical and Physical Tests

E691 Practice for Conducting an Interlaboratory Study to Determine the Precision of a Test Method

E177 Practice for Use of the Terms Precision and Bias in ASTM Test Methods

3. Summary of Test Method

3.1 Samples of uncured hides and skins are serially diluted and plated on agar containing casein from skim milk. The

plates are incubated under aerobic conditions at 35 °C for 48 h. After incubation, to determine bacteria that can hydrolyze protein (proteolytic), the plates are flooded with dilute acid and the colonies showing a halo are counted.

4. Significance and Use

4.1 This test method enumerates proteolytic bacteria. Proteolytic bacteria have been known to cause damage to hides and skins.

5. Apparatus

5.1 *Incubator*, 35 ± 1 °C.

5.2 *Colony counter*—(not mandatory, but highly recommended).

5.3 *Sterile pipets*.

5.4 *Bent glass rods*, sterile.

5.5 *Stomacher*, for mixing initial dilution. (If stomacher is unavailable, hand-mix.)

5.6 *Balance*.

5.7 *Sterile petri dishes*.

5.8 *Autoclave (sterilizer)*. (Check the effectiveness of sterilization weekly. For example, place spore suspensions or strips of *Bacillus stearothermophilus* (commercially available) inside glassware for a full autoclave cycle. Follow manufacturer's directions for sterilization of specific media.)

5.9 *Stomacher bags*, or sterile, sealable quart plastic bag (for example, food storage type, sterile bag).

5.10 *Cutting tool*, sterile (for example, scalpel blade and forcep, as needed for cutting fresh hides and skins).

5.11 *Vortex mixer*, for mixing dilution tubes (optional).

5.12 *pH meter*.

5.13 *Waterbath*, 45 ± 1 °C.

5.14 *Autoclave thermometer*.

6. Reagents and Materials

6.1 *5 % acetic acid*.

6.2 *Butterfield's Phosphate Stock Solution*: Dissolve 34 g KH_2PO_4 (Potassium Phosphate monobasic) in 500 mL DI

¹ This test method is under the jurisdiction of ASTM Committee D31 on Leather and is the direct responsibility of Subcommittee D31.02 on Wet Blue.

Current edition approved Sept. 1, 2021. Published October 2021. Originally approved in 2012. Last previous edition approved in 2016 as D7818 – 12 (2016). DOI: 10.1520/D7818-12R21.

² For referenced ASTM standards, visit the ASTM website, www.astm.org, or contact ASTM Customer Service at service@astm.org. For *Annual Book of ASTM Standards* volume information, refer to the standard's Document Summary page on the ASTM website.

water. Adjust the pH to 7.2 ± 0.1 with 1N – 6N NaOH. Bring volume to 1 L with DI water. Sterilize for 15 min at 121 °C.

NOTE 1—Typical autoclave setting is 120 – 124 °C. (See 5.8.)

6.3 *Butterfield's Phosphate Diluent (BPD)*: Take 1.25 mL of Butterfield's Phosphate Stock solution (6.2) and bring to 1 L with DI water. Dispense into 1-L bottles and 9-mL dilution tubes. Sterilize for 15 min at 121 °C. (See Note 1.)

6.4 *Standard plate count agar* containing 100 mL of 10 % powdered skim milk solution per litre of agar.

6.5 *Alcohol* (for flame sterilizing), for example, 70 % Isopropyl alcohol.

6.6 *Bent glass rod* ("hockey-stick").

6.7 *Powdered skim milk*.

6.8 *Distilled or deionized water*.

6.9 *Bacillus stearothermophilus* spore suspensions or strips (commercially available), or equivalent.

6.10 1N – 6N NaOH.

7. Hazards

7.1 All reagents and chemicals should be handled with care. Before using any chemical, read and follow all safety precautions and instructions on the manufacturer's label or MSDS (Material Safety Data Sheet).

8. Sampling

8.1 The specimen shall be sampled in accordance with Practice D6715, and placed in sterile containers.

9. Preparation of Standard Plate Count Agar

9.1 Prepare the standard plate count agar per manufacturer label directions.

9.2 Autoclave the prepared agar for 15 min at 121 °C. (See Note 1.)

9.3 Prepare a 10 % powdered skim milk mixture by adding 10 g powdered skim milk to 100 mL DI water, then stirring the mixture to dissolve it. Autoclave the mixture for 15 min at 121 °C. (See Note 1.)

9.4 Cool the agar (9.2) to 45 ± 1 °C, then add 100 mL of the sterile 10 % powdered skim milk mixture (9.3) per litre of agar.

NOTE 2—Do not allow agar to solidify prior to pouring (9.5).

9.5 Pour the sterile agar into petri dishes. Replace the cover and swirl to evenly distribute the agar. Allow to solidify at room temperature on a flat surface. When solid, invert the petri dishes, with the cover on the bottom, leaving a slight opening to allow the plates to dry for ½ h.

10. Procedure

10.1 Using a sterile scalpel, aseptically weigh a 20 ± 0.1 g specimen in a sterile bag. Include both flesh and hair side.

10.2 Add 180 g of BPD (6.3) diluent into the same sterile bag (10.1). Stomach or hand-massage for 1 min. This provides a 1:10 dilution.

10.3 Prepare the following sample dilutions using 9-mL dilution tubes (BPD): 10^{-2} , 10^{-3} , 10^{-4} , 10^{-5} , 10^{-6} , and 10^{-7} (see Fig. 1).

10.3.1 *Control Blank*—In 10.9, incubate one of the petri dishes prepared in 9.5 as-is, with the sample plates.

Example: To obtain a 10^{-2} dilution, mix the 10^{-1} dilution and pipet 1 mL of that 10^{-1} dilution into a 9-mL dilution tube.

NOTE 3—When transferring the aliquots between the tubes, the analyst must use a different pipet or pipet tip for each transfer.

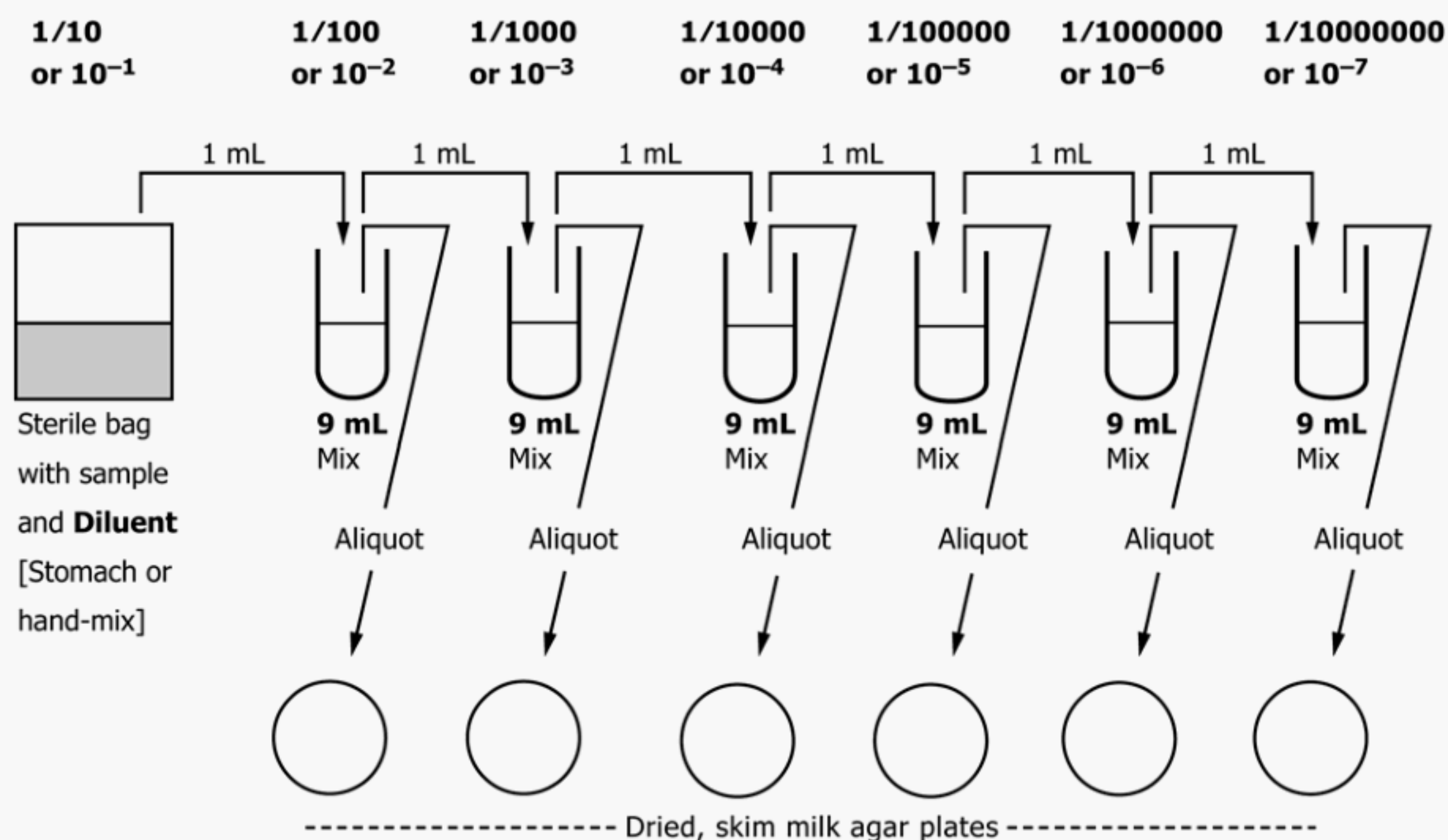


FIG. 1 Plating

10.4 Pipet an appropriate portion (0.1 mL or 0.2 mL), of the 10^{-2} dilution and place the liquid in the middle of a dried, skim milk agar plate.

10.5 Flame sterilize a bent glass rod, or obtain a sterile, autoclaved bent glass rod.

10.6 Using the glass rod, spread the liquid evenly on the agar surface.

10.7 Replace the cover and allow the plate to dry at room temperature.

10.8 Repeat steps 10.4 – 10.7 for each dilution.

10.9 Invert all plates and incubate at $35 \pm 1^\circ\text{C}$ for 48 ± 3 h.

10.10 Following incubation, count only those plates that have 25 – 250 colonies.

NOTE 4—If a plate shows *confluent growth* (i.e. bacterial growth covers the entire plate, making it impossible to determine the existence of discrete colonies), record that plate's count as TNTC – “Too Numerous To Count”). See Figs. 2 and 3 for diagrams of a countable plate and a TNTC plate, respectively.

NOTE 5—Count all the distinct colonies on the plate. If there are similar-appearing colonies growing in close proximity but not touching, count them as individual colonies, provided the distance between them is at least equal to the diameter of the smallest colony. Colonies that are impinging, and that differ in appearance, such as morphology or color, are counted as individual colonies. Colonies that are a cluster, and are similar in appearance, such as morphology or color, are counted as one colony (see arrow Fig. 4 – “7:00” position). There may also be “spreaders”: a chain of colonies not distinctly separated. Count as one colony if a chain of colonies appears to be caused by disintegration of a bacterial clump as agar and sample were mixed. Count as one colony if a spreader developed as a film of growth between the agar and bottom of petri dish. Count as one colony if a colony forms in a film of water at the edge or over the agar surface.

Estimated counts can be made on plates with >250 colonies: report as estimated counts. In making such counts, the standard 15×100 mm petri dish is considered to have an area of about 56 cm^2 , therefore, use a factor of 56 when estimating the count. Example: 0.1 mL of a 10^{-4} dilution was plated and the plate has an average count of 10 colonies per cm^2 . Therefore, the estimated count for that plate is $10 \times 56 = 560$, and the

estimated count for that dilution is $560 \times 10 \times 10,000 = 56,000,000$. Estimated counts can also be made on plates with <25 colonies: report as estimated counts.

10.11 Record each plate's dilution and count on the worksheet. This initial count is the aerobic plate count (A).

10.12 For the same plate(s) counted in 10.10, flood the plate(s) with 5 % acetic acid.

NOTE 6—Use enough of the 5 % acetic acid to fully cover the surface of the plate.

10.13 Pour off the acetic acid and immediately count only those colonies completely surrounded by a semi-clear zone.

NOTE 7—*Proteolytic Colonies*—Do not count all the colonies inside the zone; only count the colonies that cause/affect the shape of the zone. When identifying the semi-clear zone(s), it is sometimes helpful to pick up the plate and change the angle of view slightly to determine if it is a true circle or if it has another protruberance off its edge. (For weak semi-clear zones, it is helpful to rotate the plate in the light to be sure about the clearing). Look for a circle of clearing around a centrally located colony. If the clearing is an elongated shape such as in the bottom right quadrant of Fig. 5 (“5:30” position), break the cleared zone into separate circles of clearing (circles can be of varying sizes) and count the colonies located in the centers of each of the circles. When there are multiple colonies in the same clear zone, look to see if the zone is a uniform circle (caused by one centrally located colony), or if it appears to have circular bumps protruding from the edges of the central circle, each bump being caused by a separate colony.

NOTE 8—Colonies on the edge of the zone that are not fully encompassed or do not affect the shape of the zone should not be counted.

10.14 Record each plate's dilution and count on the worksheet. This second count is the proteolytic count (B).

11. Calculation of Results for Aerobic Plate Count and Proteolytic Bacteria Count

11.1 Calculate the result for aerobic plate bacteria by using the following formula:

$$\text{Aerobic plate count} = A \times D \times E \quad (1)$$

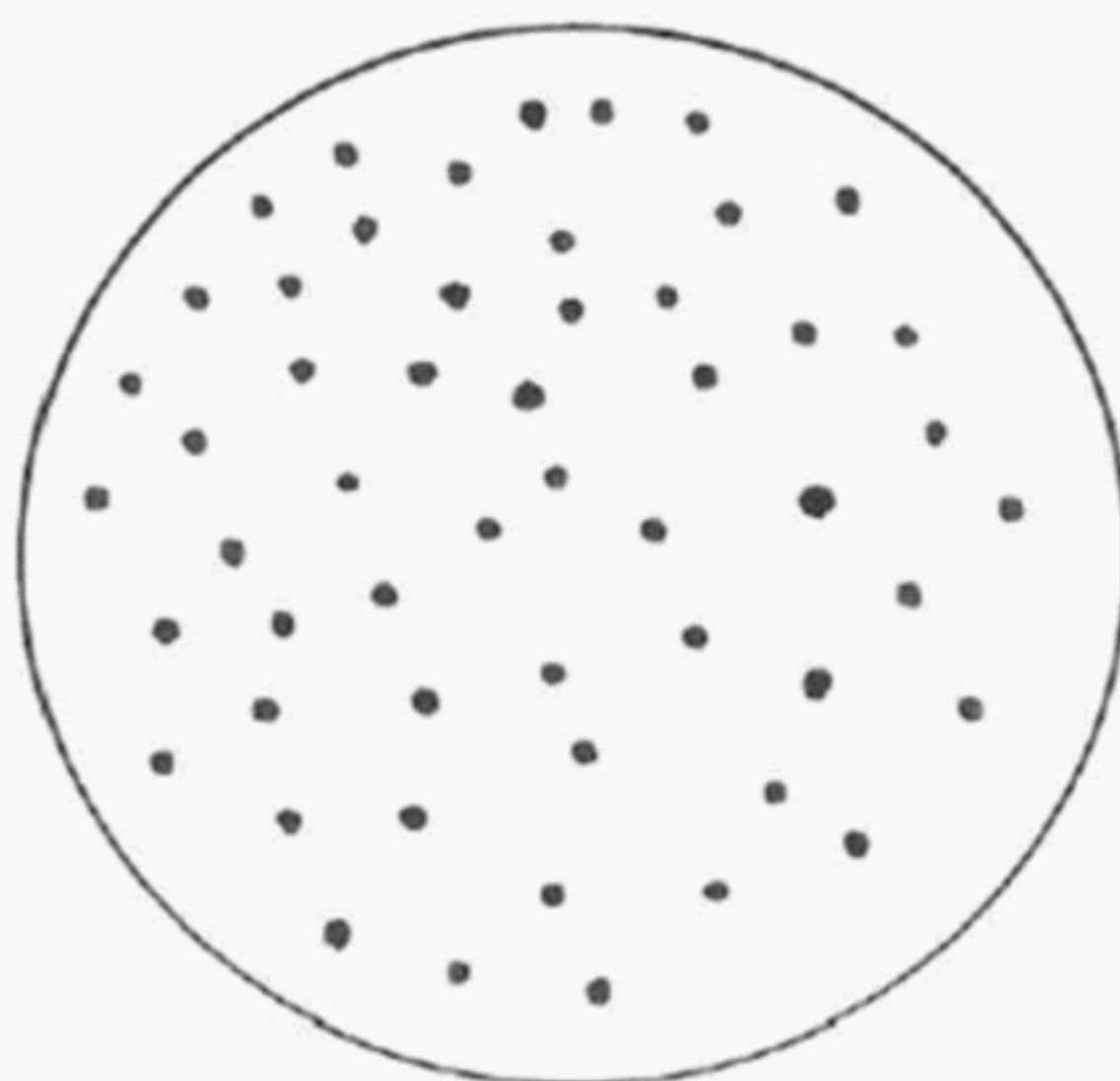


FIG. 2 Diagram of a Countable Plate

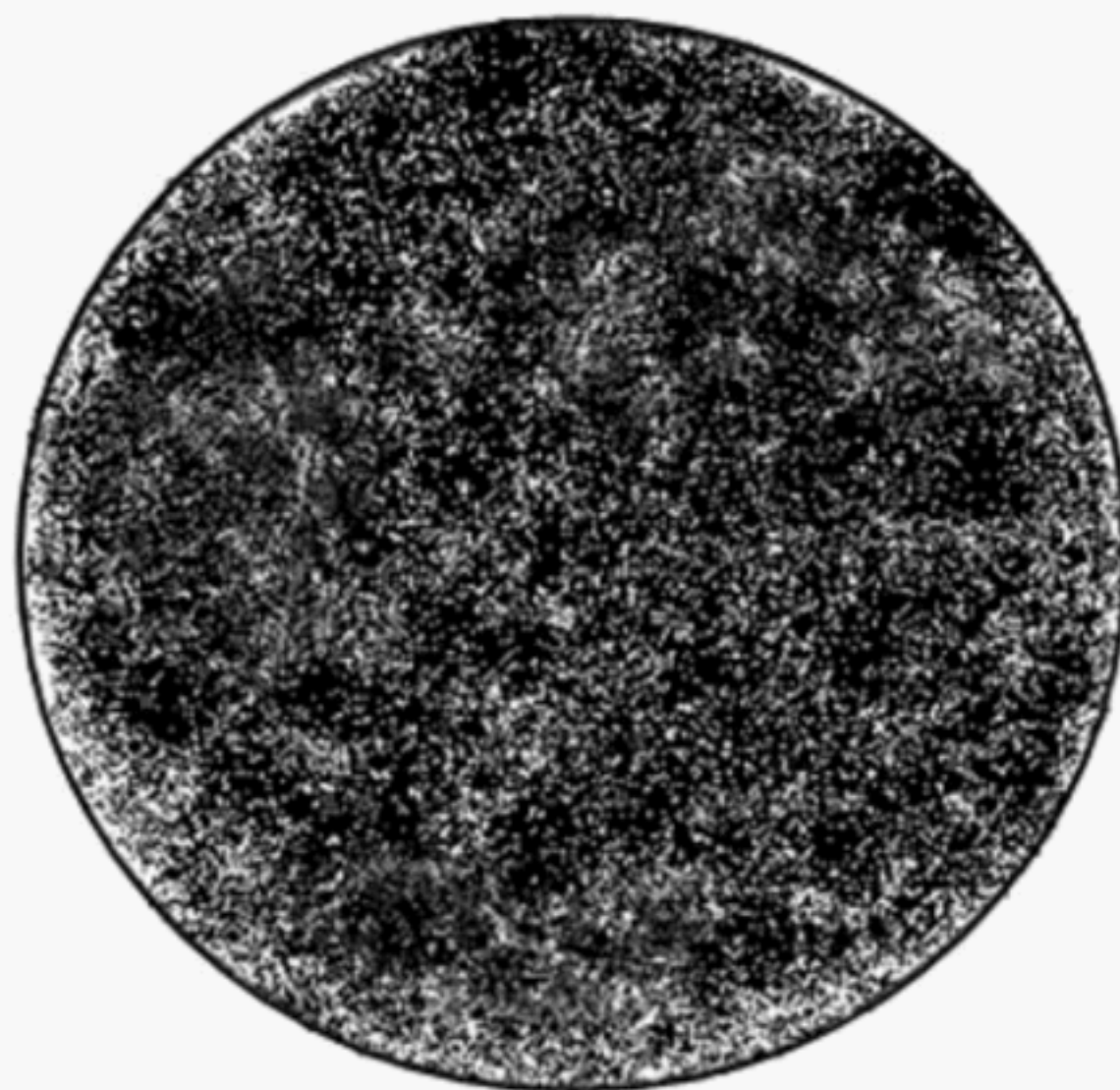


FIG. 3 Diagram of Confluent Growth (TNTC)

where:

A = number of colonies counted in step 10.11,
 D = plating factor (see Table 1), and
 E = dilution factor (see Table 2).

11.2 Calculate the result for proteolytic bacteria by using the following formula:

$$\text{Proteolytic bacteria} = B \times D \times E \quad (2)$$

where:

B = number of colonies counted in step 10.14,
 D = plating factor (see Table 1), and
 E = dilution factor (see Table 2).

12. Report

12.1 Report the results from 11.1 as Aerobic Plate Count (spread plate method) per gram of *sample* and the result from 11.2 as Proteolytic bacteria per gram of *sample*.

12.2 Report the condition of the specimen (hair-on or dehaired).

13. Precision and Bias

13.1 The precision of this test method is based on an interlaboratory study of D7818, conducted in 2010. Two laboratories participated in this study. Each of the two laboratories reported seven replicate test results for both the number of colony forming units per gram, and the Log proteolytic bacteria, of a single uncured hide material. Every “test result” reported represents an individual determination. Except for the use of only two laboratories, and a single material, Practice E691 was followed for the design and analysis of the data; the details are given in an ASTM Research Report.³

13.1.1 *Repeatability Limit (r)*—Two test results obtained within one laboratory shall be judged not equivalent if they differ by more than the “ r ” value for that material; “ r ” is the

interval representing the critical difference between two test results for the same material, obtained by the same operator using the same equipment on the same day in the same laboratory.

13.1.1.1 Repeatability limits are listed in Tables 3 and 4.

13.1.2 *Reproducibility Limit (R)*—Two test results shall be judged not equivalent if they differ by more than the “ R ” value for that material; “ R ” is the interval representing the critical difference between two test results for the same material, obtained by different operators using different equipment in different laboratories.

13.1.2.1 Reproducibility limits are listed in Tables 3 and 4.

13.1.3 The above terms (repeatability limit and reproducibility limit) are used as specified in Practice E177.

13.1.4 Any judgment in accordance with statements 13.1.1 and 13.1.2 would normally have an approximate 95 % probability of being correct, however the precision statistics obtained in this ILS must not be treated as exact mathematical quantities which are applicable to all circumstances and uses. The limited number of materials tested and laboratories reporting results guarantees that there will be times when differences greater than predicted by the ILS results will arise, sometimes with considerably greater or smaller frequency than the 95 % probability limit would imply. The repeatability limit and the reproducibility limit should be considered as general guides, and the associated probability of 95 % as only a rough indicator of what can be expected.

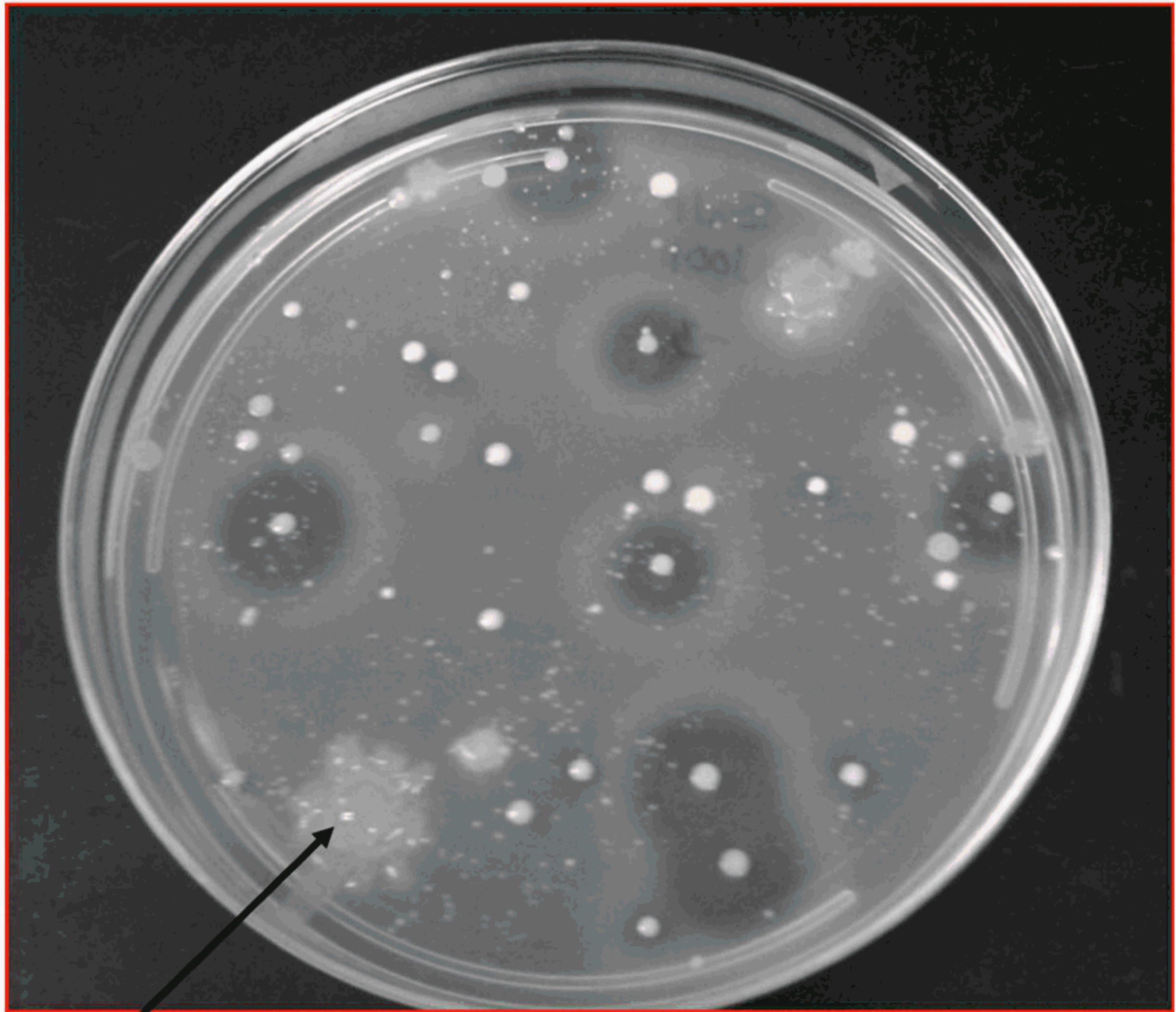
13.2 *Bias*—At the time of the study, there was no accepted reference material suitable for determining the bias for this test method, therefore no statement on bias is being made.

13.3 The precision statement was determined through statistical examination of 28 test results, from two laboratories, on a single uncured hide material.

14. Keywords

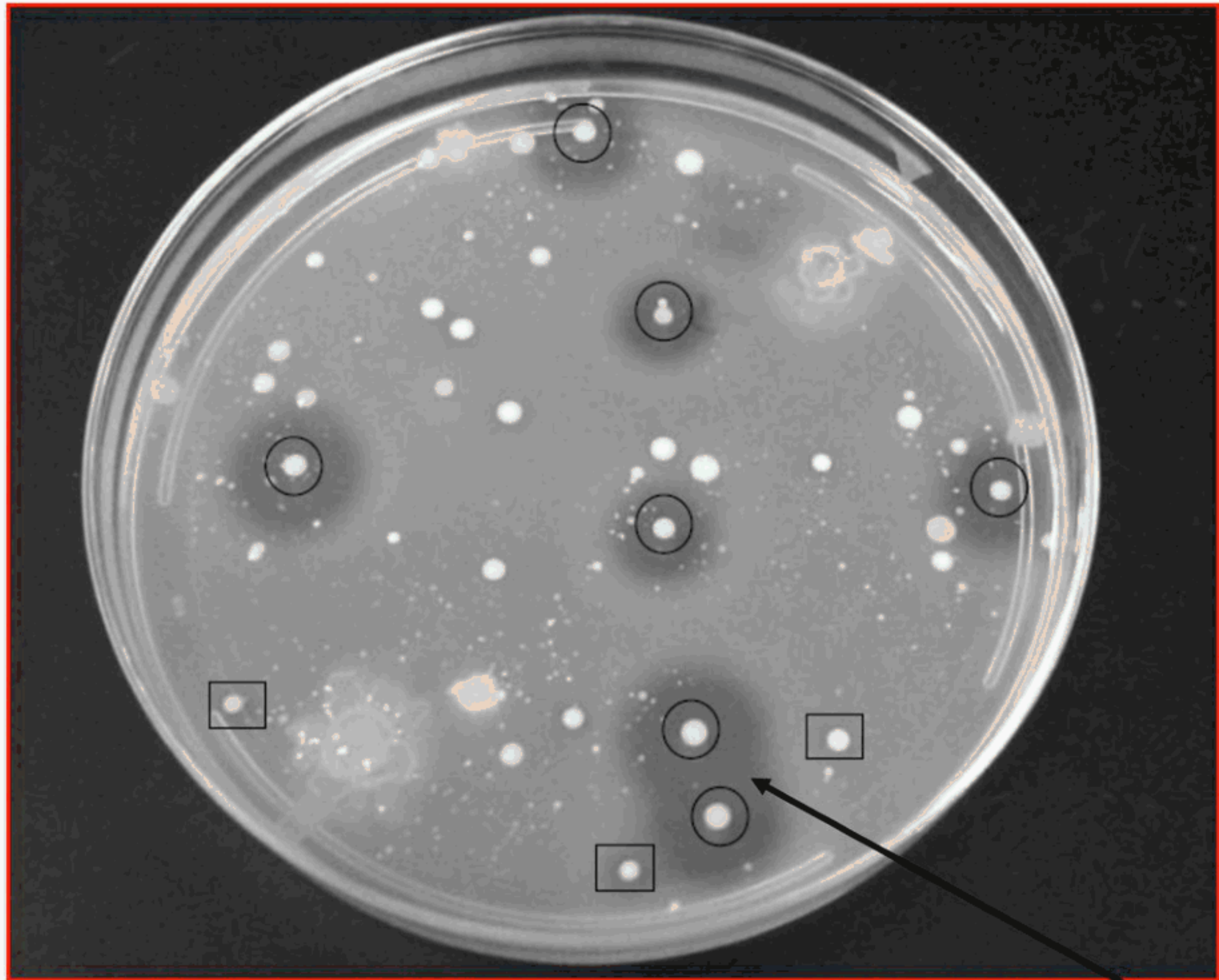
14.1 bacteria; collagen; hides; proteolytic; skins

³ Supporting data have been filed at ASTM International Headquarters and may be obtained by requesting Research Report RR:D31-1017.



Cluster

FIG. 4 Example of a Plate Before Flooding It with the Acid Solution



Elongated Shape

NOTE 1—The colonies noted with black circles are considered proteolytic colonies. The colonies noted with black squares are also considered proteolytic colonies, although their semi-clear zones are weak compared to those noted with black circles.

FIG. 5 Example of the Same Plate After Flooding It with the Acid Solution

TABLE 1 Plating Factor

mL Plated (10.4)	Plating Factor
0.1 mL	10
0.2 mL	5

TABLE 2 Dilution Factor

Test Tube Plated (10.4)	Dilution Factor
10^{-2}	100
10^{-3}	1,000
10^{-4}	10,000
10^{-5}	100,000
10^{-6}	1,000,000
10^{-7}	10,000,000

TABLE 3 Colony Forming Units per gram

	Avg ^A	Repeatability Standard Deviation	Reproducibility Standard Deviation	Repeatability Limit	Reproducibility Limit
	\bar{x}	s_r	s_R	r	R
Fresh (uncured) hide	15286	9868	9868	27631	27631

^A The average of the laboratories' calculated averages.

TABLE 4 Log Proteolytic Bacteria

	Avg ^A	Repeatability Standard Deviation	Reproducibility Standard Deviation	Repeatability Limit	Reproducibility Limit
	\bar{x}	s_r	s_R	r	R
Fresh (uncured) hide	4.103	0.292	0.292	0.817	0.817

^A The average of the laboratories' calculated averages.

ASTM International takes no position respecting the validity of any patent rights asserted in connection with any item mentioned in this standard. Users of this standard are expressly advised that determination of the validity of any such patent rights, and the risk of infringement of such rights, are entirely their own responsibility.

This standard is subject to revision at any time by the responsible technical committee and must be reviewed every five years and if not revised, either reapproved or withdrawn. Your comments are invited either for revision of this standard or for additional standards and should be addressed to ASTM International Headquarters. Your comments will receive careful consideration at a meeting of the responsible technical committee, which you may attend. If you feel that your comments have not received a fair hearing you should make your views known to the ASTM Committee on Standards, at the address shown below.

This standard is copyrighted by ASTM International, 100 Barr Harbor Drive, PO Box C700, West Conshohocken, PA 19428-2959, United States. Individual reprints (single or multiple copies) of this standard may be obtained by contacting ASTM at the above address or at 610-832-9585 (phone), 610-832-9555 (fax), or service@astm.org (e-mail); or through the ASTM website (www.astm.org). Permission rights to photocopy the standard may also be secured from the Copyright Clearance Center, 222 Rosewood Drive, Danvers, MA 01923, Tel: (978) 646-2600; <http://www.copyright.com/>